

Behavior Data Graphing - Description, Procedures, and Example

In Addition to measuring the behavior, it is very important to graph the measurement that you gather, as this allows you to have a visual image of the status of the behavior at any point in time.

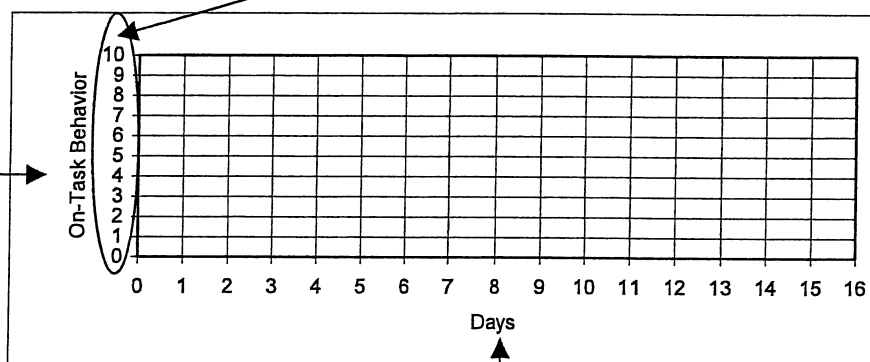
Procedures

Preparing your graph

- ① Label the horizontal axis with the time component
- ② Label the vertical axis with the behavior
- ③ Number the vertical axis

③ Number each line, starting from 0 (bottom of axis), with a regular repeating interval, by either 1's, 2's, 5's, 10's, etc., for example: 0, 1, 2, ..., 9, 10; 0, 2, 4, ..., 18, 20; 0, 5, 10, ..., 45, 50; or 0, 10, 20, ..., 90, 100). Make sure to choose your interval so that you will be able to graph the maximum amount of times that the behavior could occur during each observation.

② Enter the name of the behavior that you are measuring here



① Enter the time component in which you are measuring the behavior here (Ex. Days, weeks, sessions)

Entering information on your graph / Example

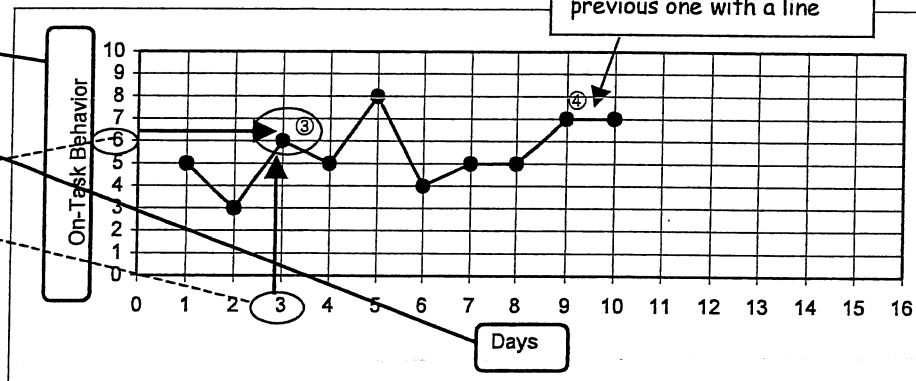
* Every time that you collect information, enter it on your graph.

To place the points on the graph:

- ① Look at the 1st column on your measurement form -On the horizontal axis, find the time component that represents when you collected the information (ex. Day 3);
- ② Look at the last column on your measurement form -On the vertical axis, find the value of the measurement (ex. 6).
- ③ Place a dot where the horizontal and vertical lines cross; ④ connect each dot to the previous one with a line.

1st and last columns of Measurement Form for On Task Behavior

Days	Total times behavior occurred
1	5
2	3
③ ① 3	② 6
4	5
5	8
6	4
7	5
8	5
9	7
10	7



Connect each dot to the previous one with a line

Adapted From KIPBS Tools - Observation Forms - GraphingForm (Rev. 3-9-06) Tieghi-Benet, M.C., Miller, K., Reiners, J., Robinett, B.E., Freeman, R.L., Smith, C.L., Baer, D., Palmer, A.(2003) *Encouraging Student Progress (ESP), Student/Team Book* Lawrence, KS: University of Kansas.